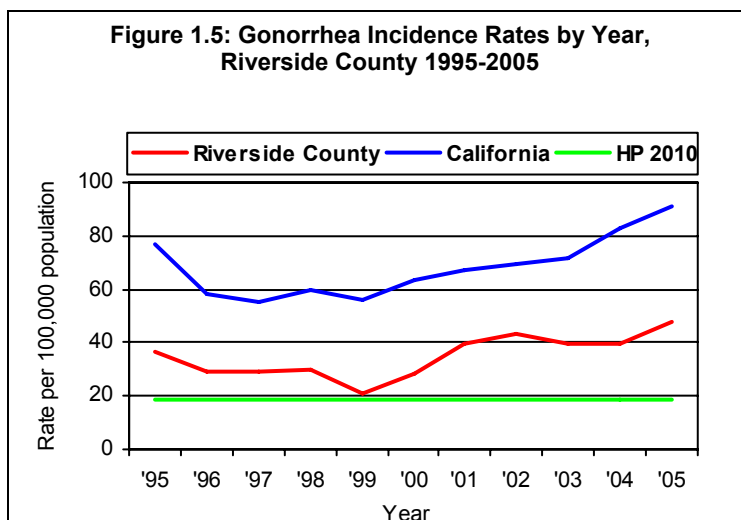


GONORRHEA

DISEASE ABSTRACT

- In 2005, gonorrhea was the third most frequently reported disease in Riverside County with 898 reported cases and an incidence rate of 48.0 per 100,000 population.
- Females aged 20-24 years had the highest incidence rate with 266.2 cases per 100,000 population.
- People diagnosed with gonorrhea are often diagnosed with chlamydia at the same visit.

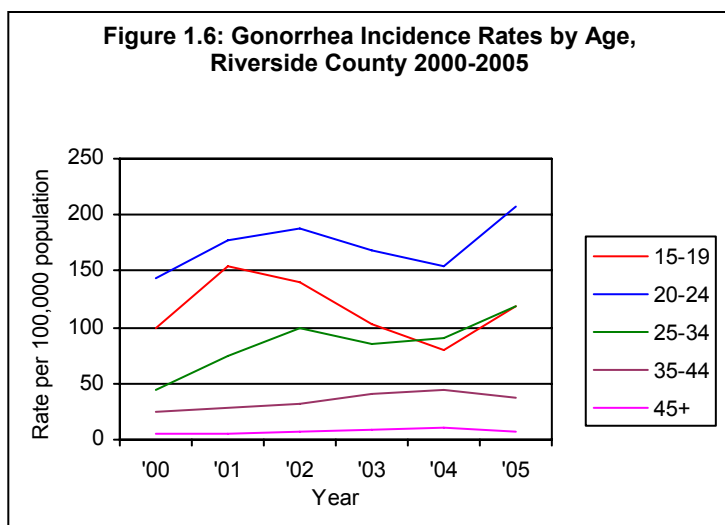


TRENDS

Both Riverside County and California have experienced a general increase in gonorrhea since 1999, peaking in 2005 with 48.0 and 91.4 cases per 100,000 population, for Riverside County and California, respectively. Healthy People 2010 set a target of 19 new cases for every 100,000 persons.

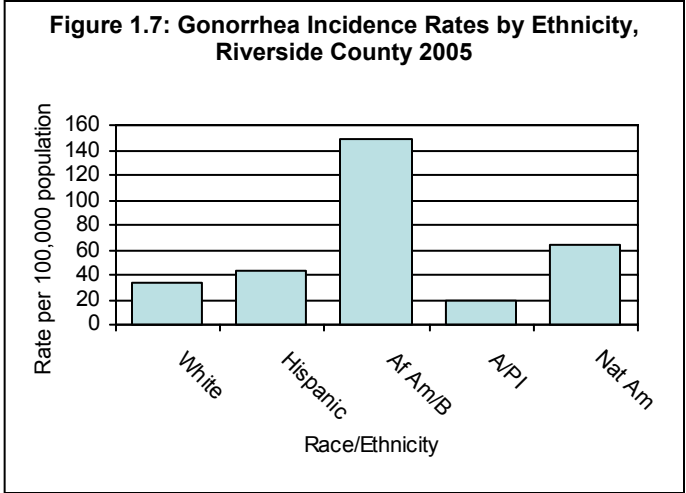
AGE

Although gonorrhea disproportionately affects adolescents and young adults, incidence rates have increased. Compared to 2004, the rate of gonorrhea in 2005 increased 49.4 percent for 15-19 year olds (79.5 to 118.8 cases per 100,000 population) and 33.4 percent for 20-24 year olds (154.9 to 206.7 cases per 100,000 population). Incidence rates for 25-34 year olds also increased 32.1 percent (90.4 to 119.3 per 100,000 population). However, rates for the older age groups have decreased slightly.



GENDER

In 2005, gonorrhea incidence rates for males and females were 47.1 and 48.8 cases per 100,000 population, respectively. The highest rate of gonorrhea in males and females occurred among 20-24 year olds, with incidence rates of 151.7 and 266.2 cases per 100,000 population, respectively.



RACE/ETHNICITY

In 2005, African-Americans/Blacks, followed by Native Americans, experienced the highest rate of gonorrhea infection among all other racial/ethnic populations. The rate in African-Americans/Blacks was more than twice the rate of the Hispanic population and three times the rate of non-Hispanic whites.

GEOGRAPHIC DISTRIBUTION

The majority of reported gonorrhea cases reside in the Western Region of the County; however, the Eastern Region has the highest incidence rate with 59.0 cases per 100,000 population.