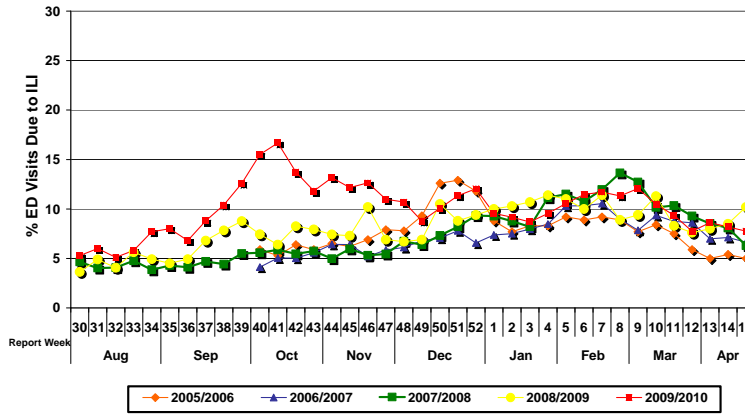


# Influenza Season 2009/10 – Riverside County, California

## Influenza Surveillance Weekly Update

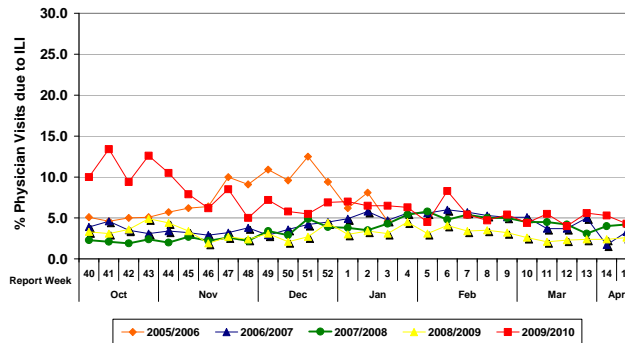
### Week ending April 17, 2010

Percent of Emergency Department (ED) Visits Due to Influenza-Like Illness (ILI), Riverside County: 2009/10 Influenza Season



During week 15, 7.8% of visits to Riverside County emergency departments were related to influenza-like illnesses. Compared to historical data, this is within normal limits.

Percent of Total Visits at Physician Sentinel Sites due to Influenza-like Illness (ILI), Riverside County: 2009/10 Influenza Season



During week 15, 4.3% of visits to physician sentinel sites were related to influenza-like illnesses. Compared to historical data, this is within normal limits.

**Deaths due to Pneumonia and Influenza:** During week 15, 4.8% of deaths were due, in part, to pneumonia/influenza. Compared to this same week last year (7.4%), this is within normal limits.

**School Absenteeism:** As of week 13\*, 9.1% of students at sentinel school sites were absent due to illness. Compared to this same week last year (10.2%), this is within normal limits. \*Data reporting delayed.

**State Influenza Activity:** During week 14\*, influenza activity in California remained sporadic. Reports of ILI from sentinel providers decreased in week 14. Laboratory detections of influenza remained low. \*Data reporting delayed.

**National Influenza Activity:** As of week 14\*, influenza activity in the United States decreased slightly. The proportion of outpatient visits for influenza-like illness (ILI) was 0.9%, which was below the national baseline of 2.3%. The proportion of deaths nationwide attributed to pneumonia and influenza (P&I) was below the epidemic threshold. Three influenza-associated pediatric deaths were reported, but one occurred during the 2008-09 season. Among 34 subtyped influenza A viruses, 33 were 2009 influenza A (H1N1) and one was influenza A (H3). \*Data reporting delayed.

**Additional Resources**

Riverside County Influenza Vaccine Locations:  
 State of California Influenza Information:  
 United States Influenza Information:

Call 211 or 1-800-464-1123 or visit <http://www.rivcoph.org/>  
<http://www.dhs.ca.gov/ps/dcdc/vrdl/html/flu/fluintro.htm>  
<http://www.cdc.gov/ncidod/diseases/flu/weekly.htm>

